

# D:O IMPLANT

***BOSS***  
NEW BONE NEW LIFE

MedPark

**BOVINE BONEGRAFT**

NATURAL BONE SUBSTITUTE

CE  
1434

Manufactured by **MedPark**

**BOVINE BONEGRAFT**

# Bovine bonegraft manufactured by Sintering Technology of MedPark

## Biocompatibility



- High blood permeability, similar pH to body fluids, rapid new bone formation without inflammatory reactions
- Sticky bone formation through PRF and CGF with independent process technology

## Excellent Pore Structure



- Selection of proper size of graft materials for suitable environment for bone regeneration
- Increased micropores allows the migration of osteoblasts for increasing new bone formation

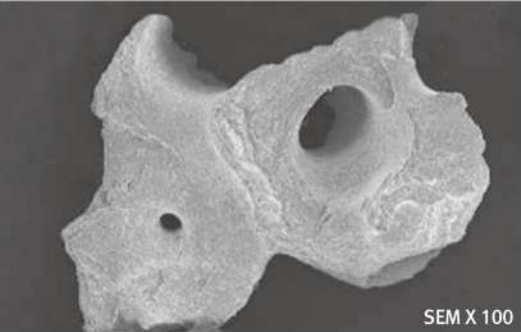
## Easy Manipulation



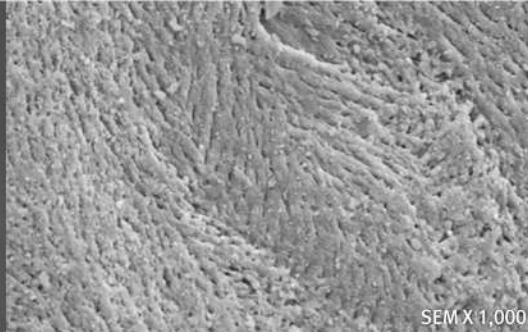
- Enhanced hydrophilicity allows user to manipulate easily
- Applicable to various indication such as Socket Preservation, Sinus lift, Periodontal Defects and Ridge Augmentation

## Specifications

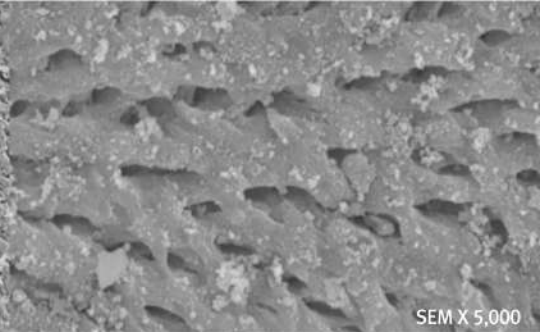
Source	Particle size	Weight	Volume
Bovine	0.2 ~ 1.0 mm (Powder Type)	0.25 g	0.5 cc
		0.5 g	1.0 cc
		1.0 g	2.0 cc
	1.0 ~ 2.0 mm (Chip Type)	0.25 g	0.75 cc
		0.5 g	1.5 cc
		1.0 g	3.0 cc
		2.0 g	6.0 cc



SEM X 100



SEM X 1,000



SEM X 5,000

## Perforations similar to human bones

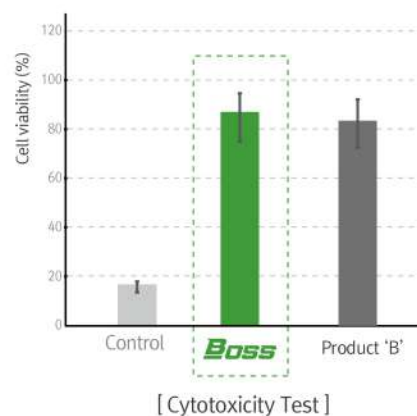
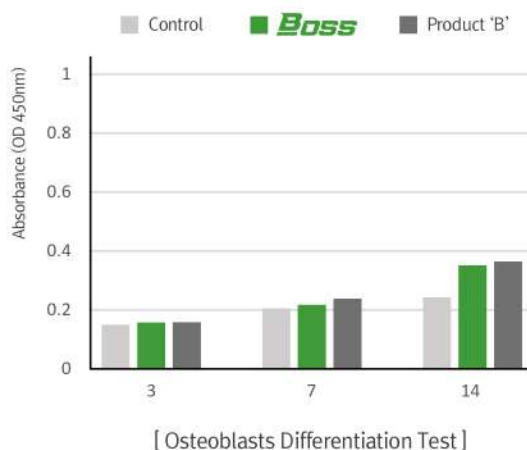
### High pore rate confirmed by the Porosimeter Test

Rough surface of microstructure makes osteoblast stick to the surface easily

(\* Measure the size and pore rate of pores present on the sample surface by adsorbing mercury on the specimen)

Type	Product	Porosity (%)
Powder	<b>BOSS</b>	<b>70.20</b>
	Company 'A'	48.74
	Company 'B'	36.36

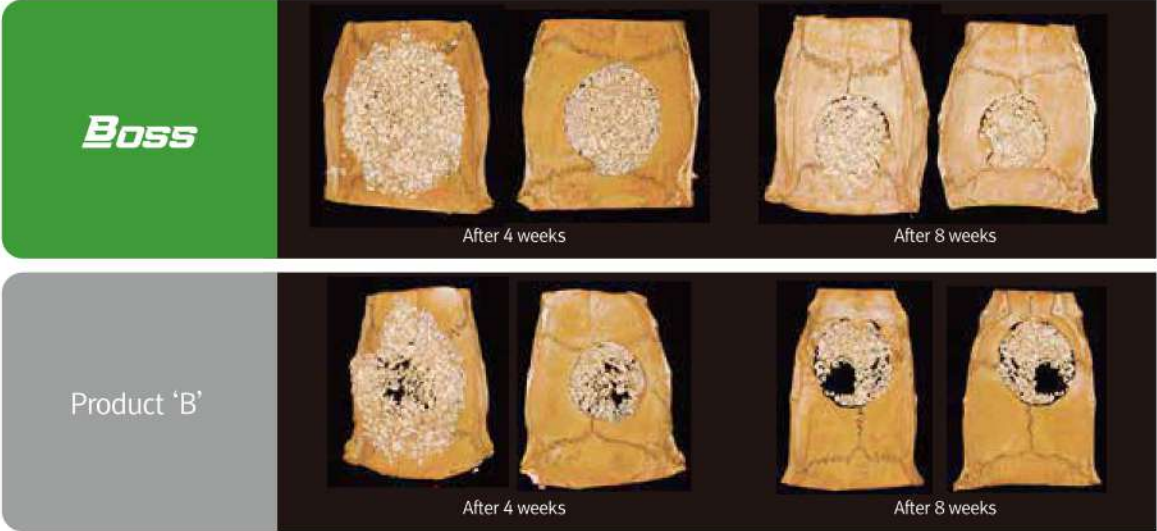
## Excellent bone formation & biocompatibility



- **Safe and stable bonegrafts without toxicity**
- Cell survival rate was equivalent to that of the Product 'B'
- Complete safety and stability verification as bonegraft
- **Excellent biocompatibility**, good differentiation of osteoblasts

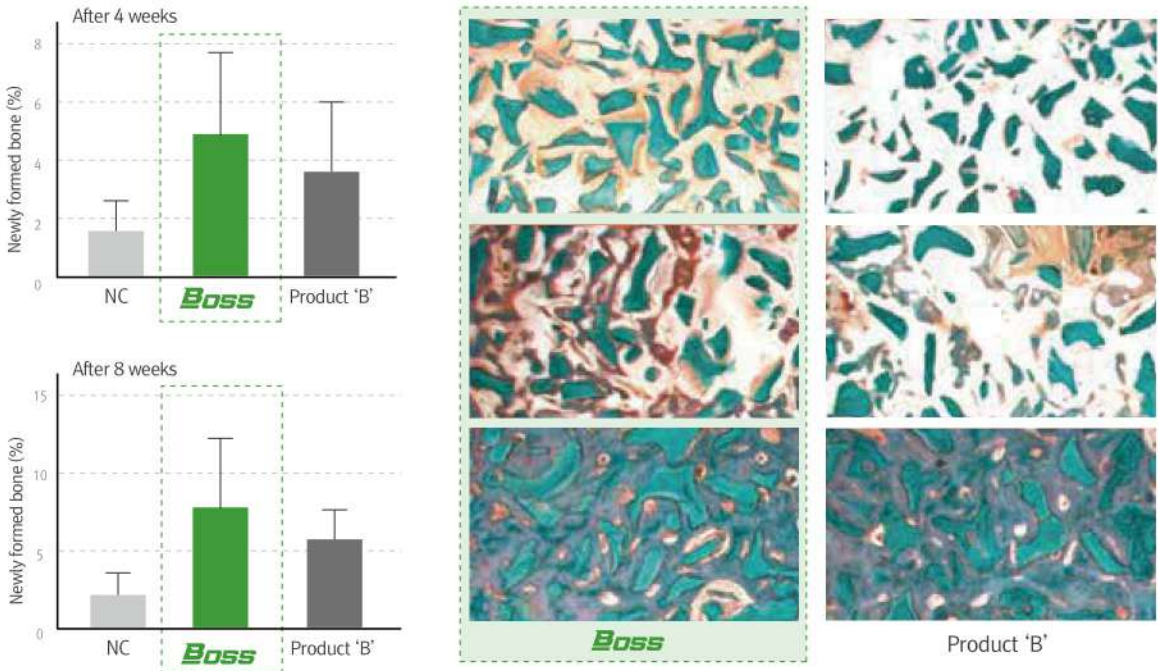
# Pre-clinical case

## Space maintenance test (Micro CT) : Small Animal (Rat)



· Superior space provision after 4 and 8 weeks in defect when compared to product 'B'

## New bone formation test (H&E Stain) : Large Animal (15 Dogs, Beagle)



## Clinical case

### Case 1



1 Preoperative X-ray



2 Incision of the affected part



3 Fixture placement



4 Application of **BOSS**



5 Application of CGF Membrane



6 Temporary Prosthesis



7 Postoperative X-ray

### Case 2



1 Preoperative X-ray



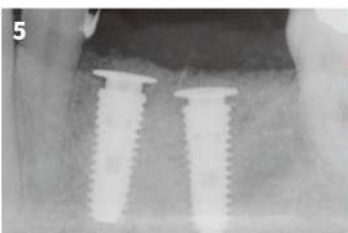
2 Fixture placement



3 Application of **BOSS**



4 Application of **COLLA**



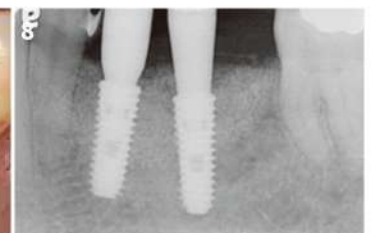
5 Postoperative X-ray



6 After 3 months  
(Detection of keratinized tissues)



7 2nd Surgery  
(Successful Bone formation)



8 X-ray After 2nd Surgery

# MedPark



[biz@medpark.net](mailto:biz@medpark.net) | [www.medpark.net](http://www.medpark.net)

## **D:O IMPLANT** DIO DIGITAL IMPLANT INDIA PVT. LTD.

### **Head Office**

Gurugram Office: 7061, 7062, 708, 709, 7101, 7102, 7111 & 7112, 7th Floor, Block B, Vipul Square, Sushant Lok, Phase-I, Gurugram, Haryana - 122009  
Contact: 0124-4751803, E-mail: [info@dioimplant.co.in](mailto:info@dioimplant.co.in)

### **Branch Office**

Mumbai Office: Unit No. 605, Business Suites 9, Plot No. 93 S.V. Road, Santacruz, West Mumbai - 400054  
Contact: 022-46021803

### **Branch Office**

Bengaluru Office : No.18/6, First Floor, Cunningham Road, Bengaluru - 560052

### **Branch Office**

Chennai Office : No. 45, 3rd Floor Ashok Towers, KB Dasan Road, Nandhiniee Sweets, Alwarpet - 600018, Chennai