

# D:O IMPLANT

MedPark

# S1

**NEW BONE  
NEW LIFE**

**DENTAL**

NATURAL BONE SUBSTITUTE

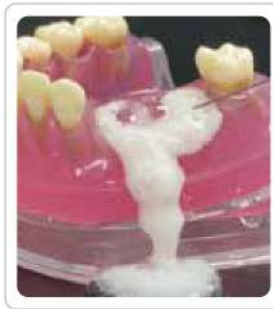


# NEW BONE NEW LIFE

## Keywords

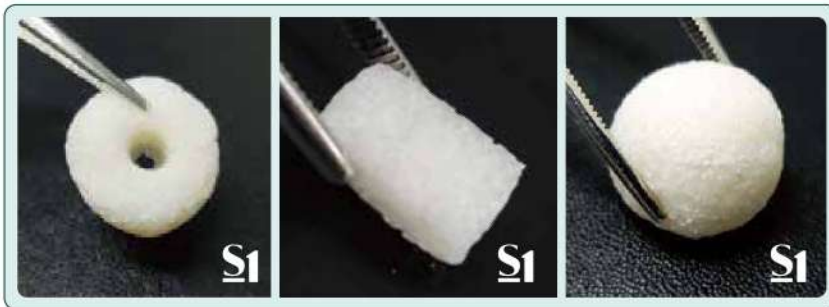


S1 (Bovine Bone)



Bovine Bone Mineral

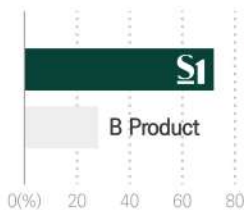
- 1 Excellent adhesion and fixation
- 1 Rigid Space Maintenance
- 1 Excellent osteoconduction



S1 (Bovine Bone)

- 1 Easy to manipulate
- 1 Various indications

### High porosity



#### Porosimeter Test

- Percentage of porosity is more than 70%
- High porosity allows rapid penetration of growth factors

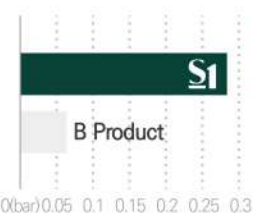
### Improved Hydrophilicity



#### Hydrophilicity Test

- Porous structure makes blood circulation easily

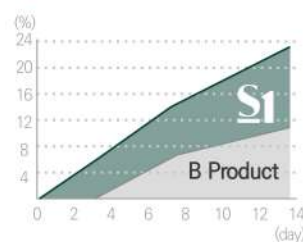
### Excellent shape maintenance



#### Pressure Test

- Perfect shape maintenance against high pressure from outside compared to other bone

### Bone formation rate



#### Mass Increase Test

- High attachment rate of ions to S1
- 21% increase in mass after 14days due to high adhesive rate of ions

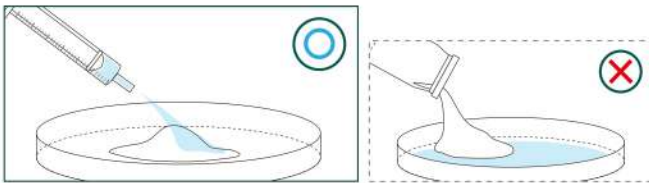
## Quick Guide

Please apply the liquid as indicated

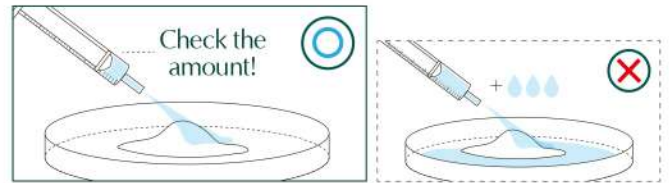
Each package is for one-time use only

Do not mix with other bonegraft

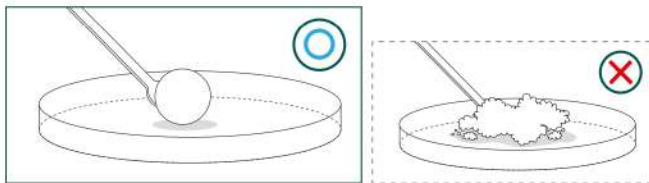
Mix with solutions well enough



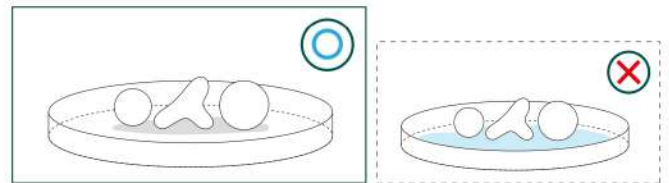
1 Place S1 in the tray and hydrate the materials with saline



1 Please use the recommended amount of saline only.



1 Knead the dough enough for at least 30 seconds by using hands or tools to form a lumpy shape before using S1.



1 Do not soak in saline after shaping for a surgery

## Recommended Amount of Saline

Particle size	Weight	Solution Amount
<b>0.2 ~ 1.0 mm</b> (Powder Type)	<b>0.5cc</b> ( $\approx 0.25g$ )	<b>0.3 ml</b>
	<b>1cc</b> ( $\approx 0.5g$ )	<b>0.6 ml</b>
	<b>2cc</b> ( $\approx 1.0g$ )	<b>1.2 ml</b>

Particle size	Weight	Solution Amount
<b>1.0 ~ 2.0 mm</b> (Chip Type)	<b>0.7cc</b> ( $\approx 0.25g$ )	<b>0.4 ml</b>
	<b>1.5cc</b> ( $\approx 0.5g$ )	<b>0.8 ml</b>
	<b>3cc</b> ( $\approx 1.0g$ )	<b>1.6 ml</b>
	<b>6cc</b> ( $\approx 2.0g$ )	<b>3.2 ml</b>

# Innovative technology

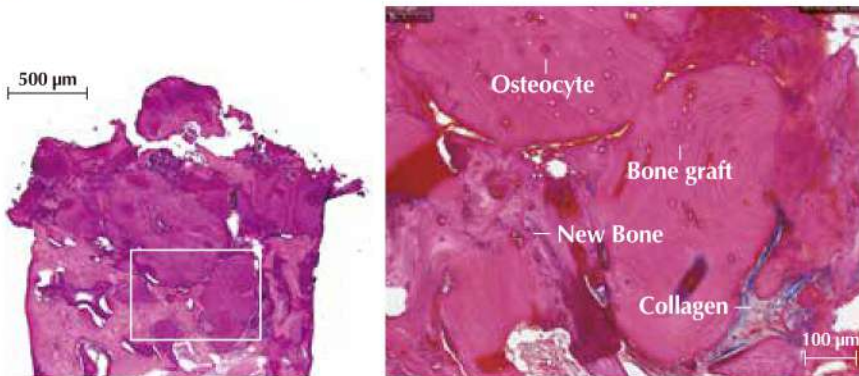
## Check it out for yourself !

### Biopsy

※ Hematoxylin & Eosin Stain

#### Case 1 | #14, Ridge augmentation

Patient Info : 65 years-old, Female

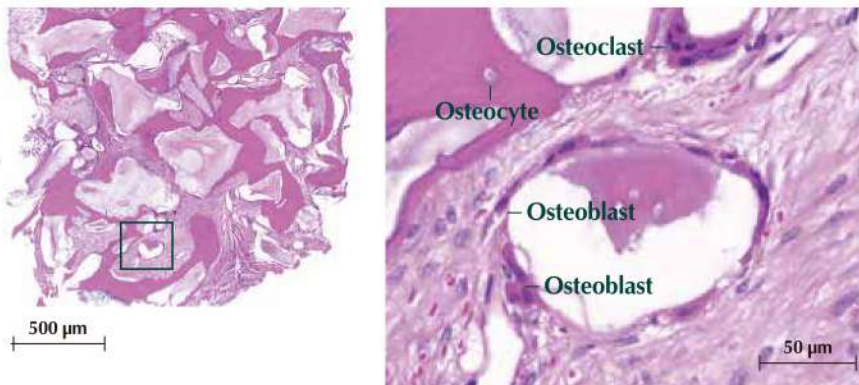


#### Clinical Opinion

- Excellent bone formation around bone graft material
- The graft materials appeared surrounded by newly formed bone
- No sign of inflammation or immune rejections

#### Case 2 | #26, Sinus graft

Patient Info : 73 years-old, Female



#### Clinical Opinion

- Excellent osteoconduction as it shows osteoclasts and new bone formation
- No evidence of inflammation or immune rejection

### Clinical cases

#### Case 1

Patient Info : 59 years-old, Female



#### Case 2

Patient Info : 66 years-old, Male



## Concept of customized Bonegraft material

### Sticky Bone without Blood Collection!

#### Bovine Bone Mineral

Unable to mold  
Lack of retentivity

Scattered & Flowing

Blood collection to make  
sticky bone

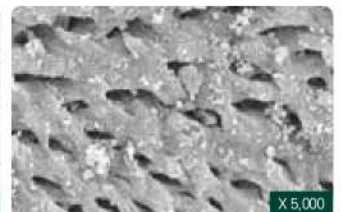
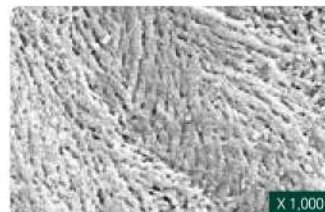


Moldable & Customizing

Customized build up

Sticky bone made easily  
with saline or blood

## BOVINE BONEGRAFT



**S1 has similar structural characteristics  
with human bones**

Due to its high porosity, S1 provides the most optimal environment for promoting osteoblast adhesion, blood vessel formation, and bone regeneration.

# MedPark

## **D:O IMPLANT** DIO DIGITAL IMPLANT INDIA PVT. LTD.



E-mail [biz@medpark.net](mailto:biz@medpark.net)  
[www.medpark.net](http://www.medpark.net)

### **Head Office**

Gurugram Office: 7061, 7062, 708, 709, 7101, 7102,  
7111 & 7112, 7th Floor, Block B, Vipul Square,  
Sushant Lok, Phase-I, Gurugram, Haryana - 122009  
Contact: 0124-4751803, E-mail: [info@dioimplant.co.in](mailto:info@dioimplant.co.in)

### **Branch Office**

Mumbai Office: Unit No. 605,  
Business Suites 9, Plot No. 93 S.V. Road,  
Santacruz, West Mumbai - 400054  
Contact: 022-46021803

### **Branch Office**

Bengaluru Office : No.18/6,  
First Floor,  
Cunningham Road,  
Bengaluru – 560052

### **Branch Office**

Chennai Office : No. 45,  
3rd Floor Ashok Towers,  
KB Dasan Road, Nandhiniee Sweets,  
Alwarpet - 600018, Chennai